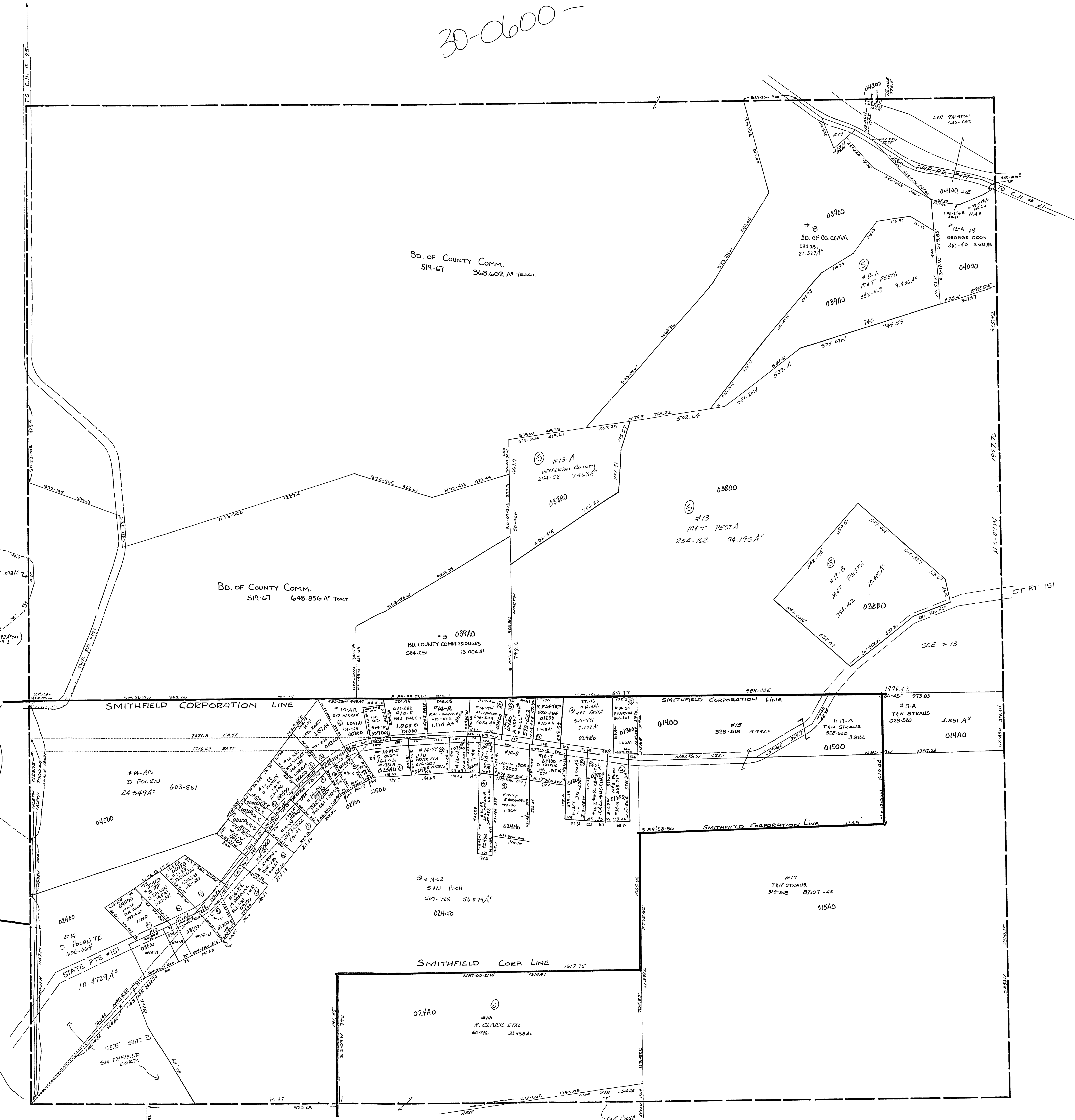
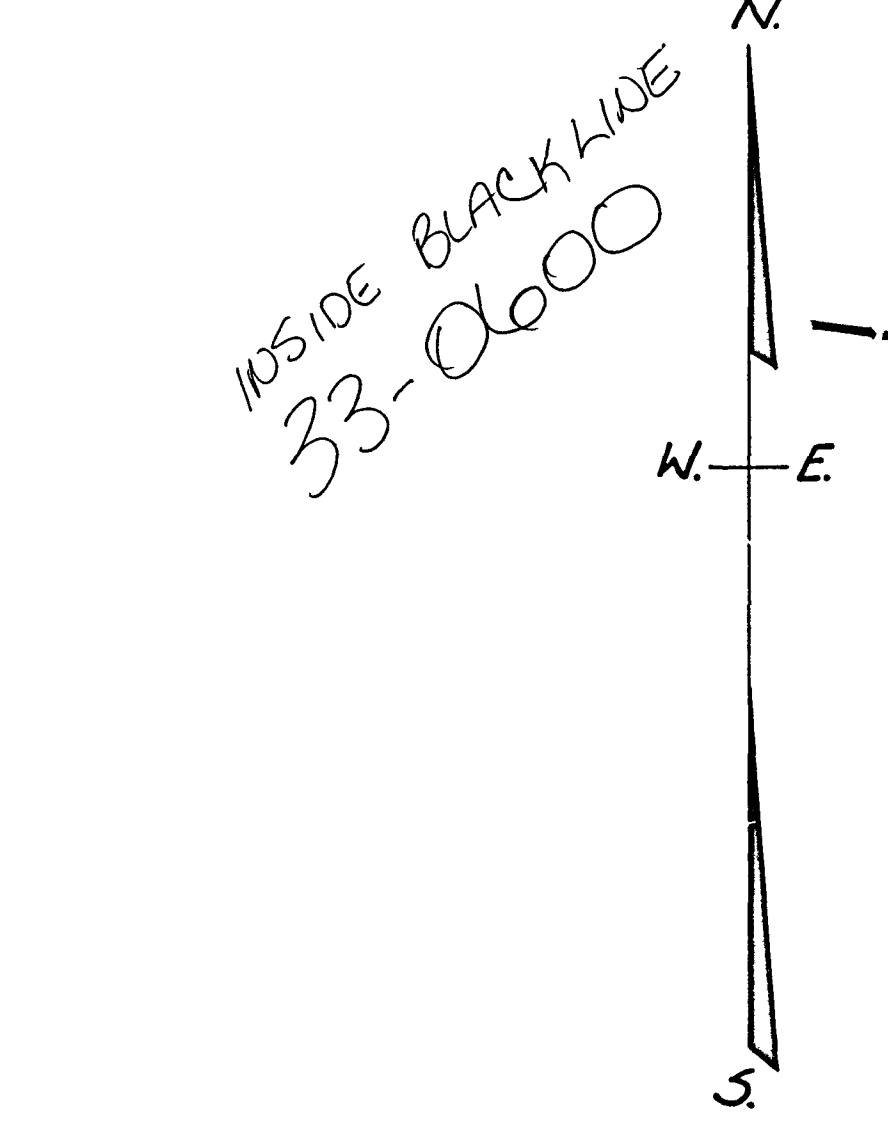


30-0600-

#11	MINGO SPORTSMAN CLUB	476.544	.0324 AC	(127,392 sq ft)
#12	WINDING LAKE COE	79.520		
#12A	DM DILLON	464.169	0.9184 AC	
#12B	DM JOHNSON	634.880	.3432 AC	
#12C	A WHEELER ETAL	186.990	.282 AC	
#12D	D K CASO	511.997	.324 AC	
#13	CH JOHNSON	634.880	.738 AC	
#13A	D S ODEN	164.727	.459 AC	
#13B	J VENEDETTA	535.138	.345 AC	
#13C	A WHEELER ETAL	186.990	.282 AC	
#13D	D S ODEN	164.725	.226 AC	
#13E	D S ODEN	164.727	.226 AC	
#13F	M ROSOWAC	336.428	.585 AC	
#14	D K CASO	511.447	0.459 AC	
#14A	J VENEDETTA	552.191	0.455 AC	



SMITHFIELD TWP.
SEC. 6, T. 8, R. 3
SCALE: 1"=200'